

# DLW-S-001



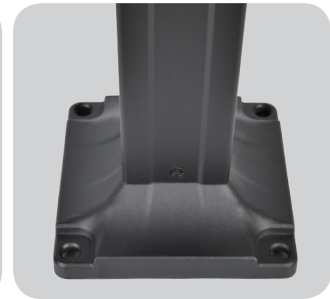
LED



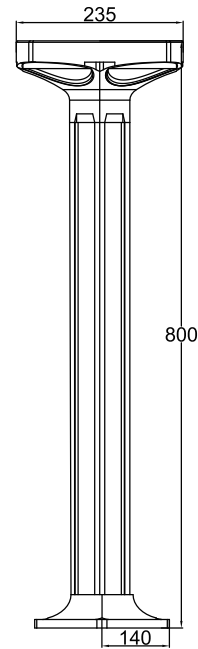
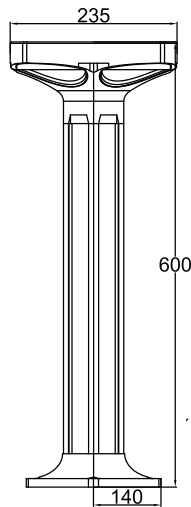
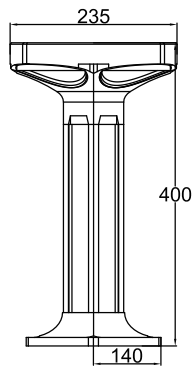
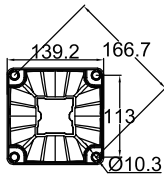
Injection PC diffuser



Solar panel



Base



## Application:



Walkways



Parks and Gardens



Car parks



Prestigious



Retail



Amenity



## **Features:**

- Main body is made of Die-casting aluminum alloy with extruded aluminum alloy.
- The diffuser is a Opal anti-UV injection polycarbonate for high efficiency and vandal resistance.
- Solar panel: Monocrystalline silicon-5W/5V.
- 2835 led chip and LiFePO4 Lithium battery 6.4Ah/3.2V.
- 3000K & 6500K as regular ,other CCT options.
- Tamper proof fixings for increased vandal resistance.
- Anti-UV electrostatic powder spraying,regular color:Black
- IP65 rating water and rust proof protection.
- IK08 rating housing protection.
- Charge time:5-6hours.
- Work time:three night by full charge.
- Warranty is 3 years.

## **Specification:**

Item No.	LED	Size	Wattage	CCT	CRI
DLS-S-001	2835	235*235*H400mm	3W	3000K & 6500K	Ra≥80
DLS-S-001	2835	235*235*H600mm	3W	3000K & 6500K	Ra≥80
DLS-S-001	2835	235*235*H800mm	3W	3000K & 6500K	Ra≥80
DLS-S-001	2835	235*235*H1000mm	3W	3000K & 6500K	Ra≥80